

# NEWSLETTER



31ST ANNUAL SAN DIEGO KOI SHOW

## March 2018 Edition

### In this Issue

Welcome	Page 2
Show Poster	Page 3
Koi Show News	Page 4
Koi Glossary	Page 5
Advertising	Page 6
Store Sponsors	Page 8
Sales Table	Page 9
Committee	Page 10

## Northern Branch Meetings

Wanneroo Recreation Centre, Scenic Road, Wanneroo  
7.30pm, second Tuesday of each month

Next Meeting: 10th April

## Southern Branch Meetings

Willetton Pavilion, Apsley Road, Willetton  
7.30pm, fourth Wednesday of each month (except Dec)

Next Meeting: 25th April

Got a story for the newsletter? Send them in to us [editor@koiclubwa.com](mailto:editor@koiclubwa.com)

Copyright © 2018 The Koi Society of Western Australia Inc. All rights reserved. ABN 63963167058  
Articles and advertisements are the opinions of the authors and companies concerned, therefore The Koi Society of WA Inc. and its individuals bear no responsibility for statements contained therein.

# Welcome & News

I hope everyone is well and your koi are looking great!

It's now 2 months until the Annual Koi Show so make sure you have picked which fish you are going to enter so you can get pictures of them and make your entry on our [website](#). You can also find the [show entry pack](#) for all the details on the show. Plus now is the time to be conditioning these fish ahead of show day.

There is a page of info from the Show Chairperson on page 4.

If you haven't shown before, your first time is free and it's pretty simple. If you need any help you can contact one of the committee or show chair.

The Show Presentation dinner will again be on the Monday night following the show and will be at the restaurant at Willow Pond. More details will be available next month.

The Auction on the weekend was a great success, thanks to everyone that came along whether you were buying, selling or helping.

Memberships for both KSWA and ZNA are due in April. The cost for KSWA renewal will be \$50 and for the ZNA will be \$150. You will receive an email with details for payment of these memberships shortly.

Thanks to everyone who has already gone to the Facebook page and joined in the discussion. But if you haven't already, 'like' this page, and watch the informational videos so you can share them with your Facebook & Real Life friends to spread the word. <https://www.facebook.com/auscarpplandiscussion/> Secondly we need you to write a quick message to Senator Sterle who is the WA Federal Senator so that he knows we are very worried about this. Go on his site and send a message with the info you learn from the videos and tell him what you think about this plan and that you are against it. <https://www.glennsterle.com.au/about>

## KSWA Financial Report - February 2018

### Event Calendar

Tuesday 10th April - Northern Branch Meeting, Wanneroo

Wednesday 25th April - Southern Branch Meeting, Willetton

Tuesday 8th May - Northern Branch Meeting, Wanneroo

Wednesday 22nd May - Southern Branch Meeting, Willetton

**Sunday 27th May - KSWA Annual Koi Show**

Tuesday 12th June - Northern Branch Meeting, Wanneroo

Wednesday 27th June - Southern Branch Meeting, Willetton

**Sunday 15th July - Koi Auction**



# 28th Annual Koi Show

Sunday 27th May 2018

## Willow Pond

459 Nicholson Road  
Canning Vale

Family Friendly

**FREE ENTRY**

10am - 2pm

See Hundreds of WA's  
Biggest & Best Koi

Koi & Dry Goods  
For Sale  
Plus Pond & Garden  
Product Displays



International  
ZNA Judge

[www.koiclubwa.com](http://www.koiclubwa.com)



# Annual Koi Show News

Dear Members,

Our Annual Show is fast approaching on Sunday 27 May 2018. I'm looking forward to serving as the Show Chairperson again this year, and hope to see you all at the event.

\* Online entries are now open on the website (direct link available on our homepage [www.koiclubwa.com](http://www.koiclubwa.com)).

\* If you don't have a computer, you can bring 1 photo of each fish to any meeting with class/variety/size written on the back, and I will scan and enter them.

\* The logistics are unchanged from last year: our location in the beautiful gardens at Willowpond; the water which will come from the same water truck source as previous years; and our hard-working team (Des as Chief Steward, Brett H as Logistics, Ryan as Entries/Results, Kevin as Sponsorship/Advertising, Jun as Trophy Steward) as well as the entire committee who help out.

\* Remember you can enter up to 3 fish per variety per class in Classes 1-4. Mature, Jumbo and Table Show/Young Champion can have as many entries as you like.

\* The latest copy of the Show Entry Pack has been added to the website (on the Forms page or there is a link straight from the homepage)

\* Our judges this year are Anja Albertsboer and Richard Albertsboer, both ZNA certified and from the Netherlands (home of the biggest koi show on earth).

\* First time Exhibitors pay no Show entry fees as always. We are here to help whether it's which variety to enter a fish in, or advice on transporting your fish to the Show. Call me anytime on 0428746620, email [info@koiclubwa.com](mailto:info@koiclubwa.com), or come along to any meeting.

\* Show entry fees are the same as before: Junior Exhibitor free, Table Show/Young Champion free, all other classes are \$10 per fish capped at \$100 max.

\* Members wanting to sell fish: enter 5+ fish in the Show, selling space is \$80 per bin (max 2 bins) and the cost includes water (from same trucks as Show water), air pump and main line. Members to provide their own bin/s, airstones, airline/fittings, bags and oxygen.

\* Presentation dinner will be at Willowpond on the Monday night, further details will be in the next newsletter.

Thank you and looking forward to seeing all your fish!

Shona Macskasy  
Show Chairperson  
0428746620



# Koi Term Glossary A-G

Here are some more terms used in the Koi world. Did you know some or all of these?

**Aizumi** – (eye ZOO me) ‘Blue’ sumi tinged with indigo (blue).

**Aka Hajiro** – (AH ka ha JEE row) A red koi with white tips to the pectoral and caudal fins.

**Akame** – (AH kah may) An eye with a red iris. Most often seen in Kigo.

**Beret Hi** – (BEH reh HEE) Asymmetrical head hi (red) on one side only.

**Boke** – (BOH kee) Undeveloped Showa sumi. Blurred or faded effect to color or pattern.

**Bozu** – (boh ZOO) No hi on the head, bald head.

**Chupa** – (CHOO pah) Medium quality fish.

**Dagoi** – (DAH goy) Poor quality fish.

**Dohmaki** – Pattern extending below the lateral line.

**Doware** – (dohn WAH reh) Large white area of a pattern.

**Fucarin** – (FOO kah reen) The area of skin around the smaller scales of good metallic koi. The smaller the scales, the greater the luster.

**Fuji** – (FOO jee) The almost metallic finish on the head of some young non metallic koi. Most often seen in good young Sanke and occasionally, Ogon and Kohaku.

**Gin** – (geen) Shiny, reflective, silver metallic.

**Ginga** – (GEEN gah) Metallic koi with black and white markings. A cross breed of a Hajiro Kawarimono with a Platinum Ogon.

**Goke** – (GOH keh) Fish scale.

**Goma** – (GOH mah) Sesame’ or scattered sumi.

Thanks to [koimudpond.com](http://koimudpond.com) for these terms.

**RUSSIE KOI WA**

**INTRODUCES**



DracoDrum

**TO AUSTRALIA**

DracoDrum products consist of the unique 'Drop-in' model and the new standalone models.

- Model range is designed to deal with 10 to 25,000 litre capacity flow
- The 'Drop-in' model fits within existing filtration systems thereby removing any additional footprint
- The standalone model with a unique curved body design which eliminates deadspots and increases chassis strength

DracoDrum is positioned very competitively in the RDF market without compromising on quality

Why consider a DracoDrum RDF over cheaper mechanical filtration methods?-

- Removes particles down to 58microns (less than the width of a human hair)
  - Vastly reduces maintenance and cleaning - you can go away and not worry about your filter clogging up
  - Would you like to eliminate brush and jap matt cleaning?
  - Indeed, would you like to eliminate almost any filter cleaning?
  - Like superior water quality and clarity - that polished effect?
- Be able to 'drop in' a Dracodrum into a current filter chamber, Nexus or vortex?
  - Fit the DracoDrum as a 'stand alone' to an old or new build pond
- It is designed to self clean with mains water pressure, no high pressure pump unit.  
On standby the unit uses less than 12 watts/hr and in full wash mode, 35 watts.

To find out more on the DracoDrum contact the Australian agent-

**0419907973**

**[WWW.RUSSIEKOIWA.COM.AU](http://WWW.RUSSIEKOIWA.COM.AU)**

**[WWW.DRACODRUM.COM](http://WWW.DRACODRUM.COM)**

**RUSSIE KOI WA ABN. 53 140 014 508**

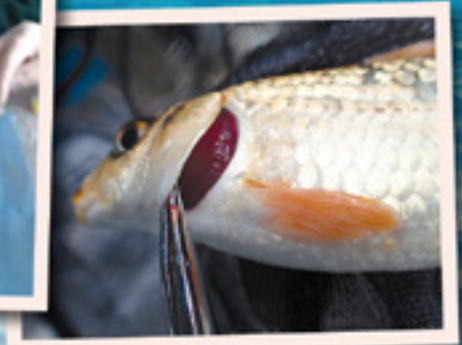


# For All Your Fishes' Veterinary Needs

Fish Vets: Perth | Sydney | Melbourne | Canberra  
Aquatic Animal Specialists: Singapore | Townsville



- Pet Fish
- Public Aquaria
- Farm
- Medicines
- Research
- Lab Diagnostics
- On-site Veterinary Services



**The Fish Vet**  
ABN: 83 072 433 594

**The Fish Vet – Dr Richmond Loh** *BSc, BVMS, MPhil, MANZCVS, CertAqV*  
thefishvet.com.au | thefishvet@gmail.com | 0421 822 383



# KSWA Store Sponsors

The KSWA has arranged a special discount for our members to receive when they purchase from their store. All you need to do is show your membership card at point of sale. You can either show it from your device or print it out and keep it with you.

We thank the following stores that are currently offering this discount.



4 / 176-178 Bannister Road, Canning Vale  
Phone: 9455 1411  
Tuesday – Friday: 9:30am to 5:30pm  
Saturday – Sunday: 9:30am to 5pm



Cnr Carrington & Forsyth Streets, O'Connor  
Phone: 9314 7630  
Monday to Friday: 9.00am - 5.30pm  
Saturday: 9.30am - 5.00pm  
Sunday & Public Holidays:  
11.00am - 4.00pm (Most Public Holidays)



8/1500 Albany Hwy  
Cannington WA 6107  
Phone: 9458 1970  
Monday - Wednesday, Friday  
8:30am till 6pm  
Thursday 8:30am till 9pm  
Saturday 8:30am till 5pm  
Sunday & P/Hol 9am till 5pm  
CLOSED Jan 1, Australia Day,  
Good Friday & Christmas Day

Unit 1 /10 Discovery Dr  
Bibra Lake WA 6163  
Phone: 9418 6619



2316 Albany Hwy, Gosnells  
Phone: 9490 2510  
Monday, Wednesday - Friday: 9.00am - 5.30pm  
Saturday: 9.00am - 5.00pm  
Sunday: 10.00am - 5.00pm  
Closed Tuesday & Public Holidays



4/1904 Beach Road, Malaga  
Phone: 9249 3799  
Monday - Friday: 8am - 6pm  
Saturday & Sunday: 8am - 5pm



# KSWA Sales Table

The sales table is an initiative of the KSWA to help members source quality pond and koi products at better than retail prices, a benefit of being a member of the club. All proceeds from the sales table are used as a fund raiser for the clubs needs. The Sales table is available at each branch meeting and some other club events. Please support your club by purchasing items through the sales table.

New stock of Koi & Fry food has been ordered. Available at KSWA meetings. Contact Jun on 0423 410 681 if you would like bulk food.

**Portable DC Air Pump** - 40L/min, 80L/min & 120L/min

**Water Conditioners/Dechlorinator** - 0.5L, 2.5L & 5L  
**Bacteria Clarifier** - 85g

**Koi Food** (Ocra Quick Grow, Ocra What Germ & SEKERIN)  
available in small and medium sizes + fry food - 1kg & 10kg bags

## Koi Treatments

Koi Anti Parasite, Anti Ulcer, Anti Bacteria, Fungus Control etc

## Miscellaneous

Koi 66 Variety poster & Illustrated Bible on Koi Keeping.

**API Freshwater Test Kits** - As Below



# KOI SOCIETY OF WESTERN AUSTRALIA

**Patron:** Mr Michael Cave

## Executive Committee of 2016 - 2018

<b>President</b>	Jun Hua Guo	president@koiclubwa.com
<b>Vice President</b>	Des Howlett	
<b>Secretary</b>	Shona Macskasy	secretary@koiclubwa.com
<b>Treasurer</b>	Jocelle Co	treasurer@koiclubwa.com
<b>Membership Officer</b>	Ryan Witney	membership@koiclubwa.com
<b>Sales Table</b>	Jun Hua Guo	
<b>Committee Member 1</b>		
<b>Committee Member 2</b>	Brett Thomas	
<b>Committee Member 3</b>	Joel Bacich	
<b>Committee Member 4</b>	Fred Sharp	
<b>Committee Member 5</b>		

### **Non-committee positions**

Newsletter Editor	Ryan Witney	editor@koiclubwa.com
Auction Master	Brett Thomas	
Logistics Officer	Brett Howlett	
Show Chairperson	Shona Macskasy	
Webmaster	Ryan Witney	

### **Northern Branch Committee**

Chairman	Allan Bennett
Secretary	Kevin Crook
Treasurer	Ryan Witney
Membership	Ryan Witney
Tea & Coffee	Shona Macskasy

### **Southern Branch Committee**

Chairman	Jun Hua Guo
Secretary	Jocell Co
Treasurer	Tony Herbert
Membership	Miki Mo
Tea & Coffee	Miki Mo



[www.koiclubwa.com](http://www.koiclubwa.com)



[facebook.com/KoiSocietyWA](https://facebook.com/KoiSocietyWA)